

# Evolution Mining | Ore Tracking Testimonial

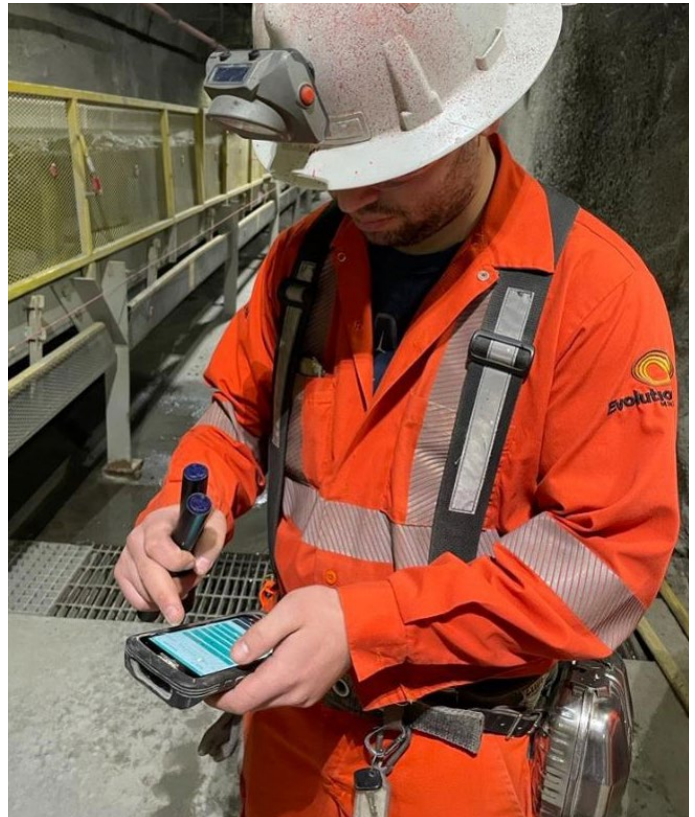
## Red Lake Mine

Red Lake, Ontario, Canada

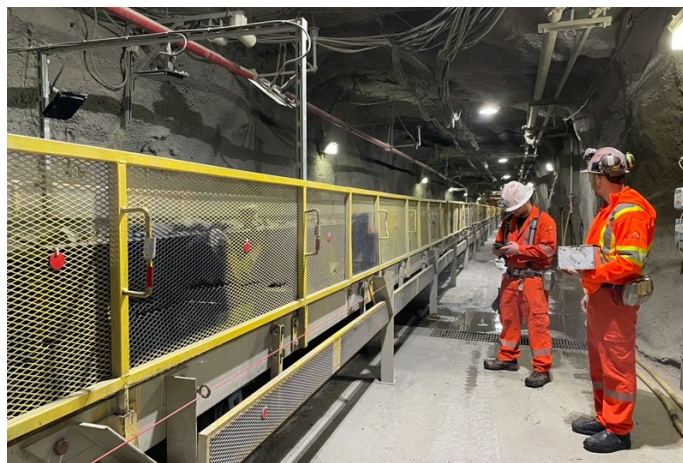
### TopVu OTS supporting Evolution's drive for quality.

The TopVu Ore Tracking System (OTS) was installed in Evolution's Red Lake Mine in June of 2022. Management wanted to better understand their ore circuit and learn more about what was going into their two mills. As the data began to flow, it became clear that waste was being processed at the mill more frequently than they had previously thought.

"TopVu has given us the tools to spotlight poor mining practices that lead to grade dilution." says Red Lake Mine's Superintendent of Geology, Amy Newport. "We have become better at keeping waste out of the ore stream and this has resulted in an overall improvement in grade quality at the mills."



*Deploying RFID eTags*



*RFID Antennae & Reader Setup*

"Installing the TopVu system was easy. TopVu came to site to assist with the first checkpoint, and we were able to install the others on our own. The investment to track our ore and waste was a small budget item. On the other hand, sending waste to the mill is expensive, so just on the improved grade quality alone, that's a good return on investment (ROI)."



# Evolution Mining | Ore Tracking Testimonial

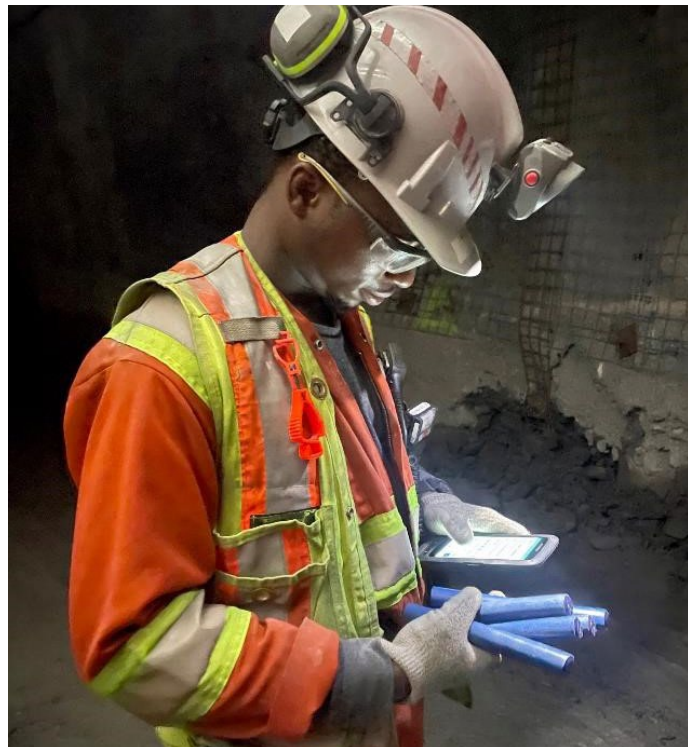
## Red Lake Mine

Red Lake, Ontario, Canada

In 2024, the geology team decided to try a more proactive approach. Additional checkpoints were installed to track ore and waste coming out of the chutes at their truck load-out facility. "If a waste tag is detected at the chute, and we are expecting ore, a message is flashed on the TopVu LED message board at the chute. This alerts the driver, and we have an opportunity to divert that material."

"Mine sites are driven by tonnes, but the thing is, they have to be quality tonnes. If we have a mine plan with so many ounces, you need those tonnes to be quality tonnes. If waste is getting into your circuit, or all of your ore is not getting into your circuit, your quality is diminished, and you are not going to get the same grades that are in your plan."

"TopVu is helping us create an improved site culture with an emphasis on both quantity and quality. I would 100% recommend the TopVu ore tracking system."



*Deploying eTags into a remuck*



11 Mary Street, Unit T  
Sudbury, ON P3C 1B4  
1.705.419.2555  
[www.topvu.ca](http://www.topvu.ca)